

# CLASSIC CORAL

*Collection*

BY



BUILDING TOMORROW'S FUTURE BY DELIVERING EXCELLENCE TODAY.





**CC-FW-1000-MO**

(3"H x 1 1/2"P x 16'L) \* Comes as 2 - 8' Sections



**CC-FW-1017-MO**

(2 3/4"H x 2"P x 16'L) \* Comes as 2 - 8' Sections



**CC-FW-1001-MO**

(4"H x 2"P x 16'L) \* Comes as 2 - 8' Sections



**CC-FW-1018-MO**

(3 1/2"H x 2"P x 16'L) \* Comes as 2 - 8' Sections



**CC-FW-1002-MO**

(3"H x 1 7/8"P x 16'L) \* Comes as 2 - 8' Sections



**CC-FW-1019-MO**

(3 3/4"H x 2"P x 16'L) \* Comes as 2 - 8' Sections



**CC-FW-1003-MO**

(5"H x 3"P x 16'L) \* Comes as 2 - 8' Sections



**CC-FW-1020-MO**

(5"H x 2"P x 16'L) \* Comes as 2 - 8' Sections



**CC-FW-1004-MO**

(6"H x 3 3/8"P x 16'L) \* Comes as 2 - 8' Sections



**CC-FW-1021-MO**

(6"H x 2"P x 16'L) \* Comes as 2 - 8' Sections



**CC-FW-1005-MO**

(7"H x 3 1/2"P x 16'L) \* Comes as 2 - 8' Sections



**CC-FW-1023-MO**

(11"H x 3 3/4"P x 16'L) \* Comes as 2 - 8' Sections



**CC-FW-1007-MO**

(5"H x 1 1/4"P x 16'L) \* Comes as 2 - 8' Sections



**CC-FW-1024-MO**

(3 1/2"H x 2 1/2"P x 16'L) \* Comes as 2 - 8' Sections



**CC-FW-1008-MO**

(7 1/2"H x 2"P x 16'L) \* Comes as 2 - 8' Sections

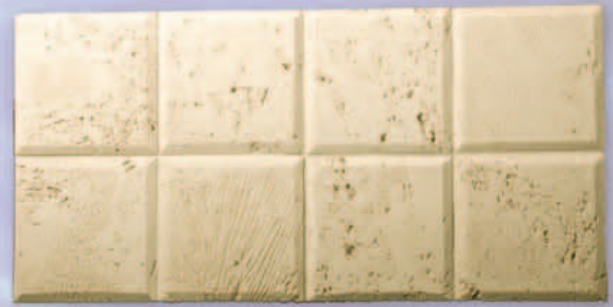


**CC-FW-1025-MO**

(4 1/2"H x 2 3/4"P x 16'L) \* Comes as 2 - 8' Sections



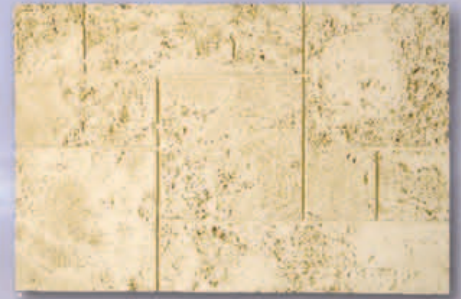
**CC-FW-1026-MO**  
(5"H x 3 1/4"P x 16'L) \* Comes as 2 - 8' Sections



**CC-FW-4000-PN**  
(24" x 48") \* Sold 2 Per Case



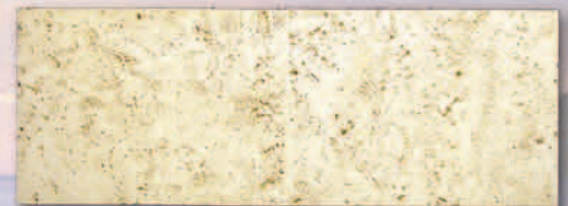
**CC-FW-1027-MO**  
(6"H x 4"P x 16'L) \* Comes as 2 - 8' Sections



**CC-FW-4001-PN**  
(24" x 36") \* Sold 4 Per Case



**CC-FW-1028-MO**  
(8"H x 5"P x 16'L) \* Comes as 2 - 8' Sections



**CC-FW-4002-PN**  
(16" x 48") \* Sold 4 Per Case



**CC-FW-1029-MO**  
(10"H x 6"P x 16'L) \* Comes as 2 - 8' Sections



**CC-FW-4003-PN**  
(18" x 48") \* Sold 4 Per Case



**CC-FW-1030-MO**  
(12"H x 6"P x 16'L) \* Comes as 2 - 8' Sections



**CC-FW-4004-PN**  
(24" x 48") \* Sold 4 Per Case

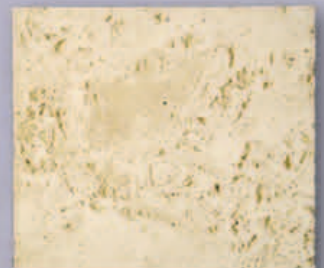


**CC-FW-6000-KS**  
(8"L x 8"H x 3"P)

**CC-FW-6001-KS**  
(10"L x 10"H x 3"P)

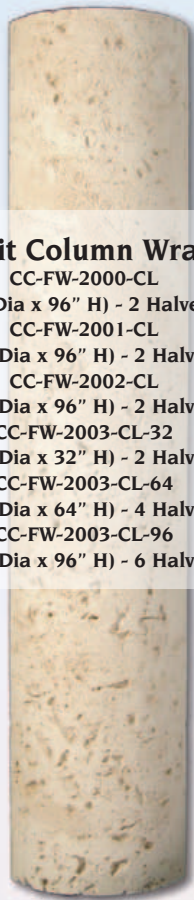
**CC-FW-6002-KS**  
(12"L x 12"H x 3"P)

**CC-FW-4005-PN**  
(42" x 48") \* Sold 4 Per Case

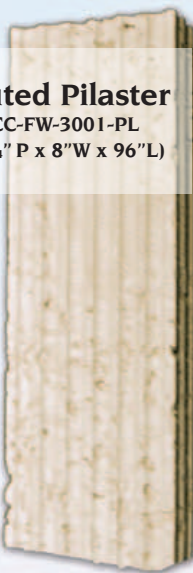




**CC-FW-3000-PL**  
(3" P x 9" W x 96" L)  
\* Sold in Pairs



**Split Column Wrap**  
CC-FW-2000-CL  
(8" Dia x 96" H) - 2 Halves  
CC-FW-2001-CL  
(10" Dia x 96" H) - 2 Halves  
CC-FW-2002-CL  
(12" Dia x 96" H) - 2 Halves  
CC-FW-2003-CL-32  
(18" Dia x 32" H) - 2 Halves  
CC-FW-2003-CL-64  
(18" Dia x 64" H) - 4 Halves  
CC-FW-2003-CL-96  
(18" Dia x 96" H) - 6 Halves



**Fluted Pilaster**  
CC-FW-3001-PL  
(2 3/4" P x 8" W x 96" L)

\* Sold in Pairs



**Plinth**  
CC-FW-3005-PB  
(10" W x 12" H x 3 3/4" P)  
\* Sold in Pairs



**CC-FW-5003-BK**  
(13" W x 16" H x 7" P)



**Temple of the Winds Capital**  
CC-FW-2014-CC (15 1/2" x 15 1/2" x 10 1/2")  
Use with 8" Column Wrap  
CC-FW-2015-CC (17 1/4" x 17 1/4" x 11 1/2")  
Use with 10" Column Wrap  
CC-FW-2016-CC (19" x 19" x 13 1/2")  
Use with 12" Column Wrap



**CC-FW-5000-BK**  
(4" W x 9" H x 6" P)  
\* Sold in Pairs



**CC-FW-5002-CB**  
(6 1/2" W x 15" H x 8" P)  
\* Sold in Pairs



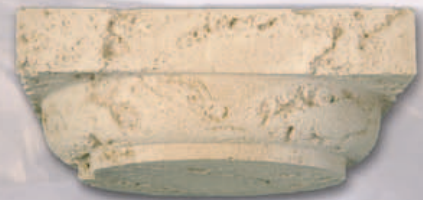
**CC-FW-5001-CB**  
(6" W x 14" H x 7" P)



**Roman Ionic Capital**  
CC-FW-2012-CC (11 1/2" x 14" x 6")  
Use with 8" Column Wrap  
CC-FW-2013-CC (14" x 17" x 8")  
Use with 10" Column Wrap



**Column Bases**  
CC-FW-2004-CC (11 1/2" x 11 1/2" x 5")  
Use with 8" Column Wrap  
CC-FW-2005-CC (13 1/2" x 13 1/2" x 5 1/2")  
Use with 10" Column Wrap  
CC-FW-2006-CC (16 1/2" x 16 1/2" x 7")  
Use with 12" Column Wrap  
CC-FW-2018-CC (23" x 23" x 9")  
Use with 18" Column Wrap



**Tuscan Column Capitals**  
CC-FW-2008-CC (11 1/2" x 11 1/2" x 4 1/2")  
Use with 8" Column Wrap  
CC-FW-2009-CC (13 1/2" x 13 1/2" x 5")  
Use with 10" Column Wrap  
CC-FW-2010-CC (16" x 16" x 6")  
Use with 12" Column Wrap  
CC-FW-2019-CC (23" x 23" x 9")  
Use with 18" Column Wrap



**CLASSIC CORAL**  
*Collection*

Inspired by the "Desert Oasis of the Ocean", Apex Urethane Millwork offers the most distinctive and breathtaking selection of "Coral" replications in millwork. Replicating the richest and most diverse ecosystems on Earth; the "life like" panels, crown mouldings, brackets, etc., articulate the delicate skeletal coral membranes seen in Brain Coral, Wire Coral, Table Coral, and Antler Coral; with the highest detail seen other than the original coral being replicated.

DISTRIBUTED BY:



105 Church Lane  
Red Lion, PA 17356  
Phone: 717-246-1948  
Fax: 717-244-8187  
[www.aumill.com](http://www.aumill.com)

SKU 91-521